

Innovate with **Premier® Dental**

The name you know, the quality you expect



Premier® Hygiene Products



Enamelon®

Everyday Relief. Everyday Protection.

Preventive Treatment Gel

- Treats sensitivity
- Relieves the discomfort of dry mouth tissues†
- Helps to prevent caries & gingivitis
- Non-irritating to patients with dry mouth†
- Contains no SLS, gluten or dyes
- 0.40% stabilized stannous fluoride (970 ppm F)
- Optimized with calcium and phosphate ions
- Non-abrasive formula for daily use
- Safe for patients of all ages**

**Dose based on age



Treats sensitivity

Occludes tubules with ACP & Fluoride

Dental hypersensitivity is under-reported by the patient.¹ Enamelon Treatment Gel is your professionally dispensed solution.

Enamelon® contains stannous fluoride along with calcium and phosphate ions that have proven effective for tubule occlusion. By blocking the exposed tubules with a combination of stannous (tin) ions along with fluoride, calcium and phosphate salts, a physical barrier is created that covers open dentinal tubules to prevent external stimuli from causing pain or discomfort.



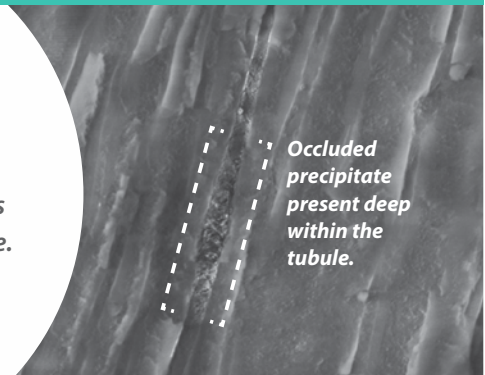
Dentin Surface Post-Treatment



Scanning Electron Micrograph (SEM) of dental tubules after 5 day application with Enamelon.

Tubules are almost completely filled in with a precipitate of Amorphous Calcium Phosphate Fluoride.

Longitudinal View of Treated Dentin



SEM Image of the newly occluded dental tubules after day 5 (10 applications) with Enamelon.

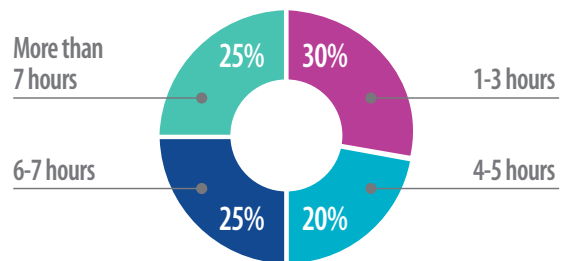
Soothes dry mouth tissue

Enamelon provides an immediate and long lasting soothing, moisturizing and lubricating effect.

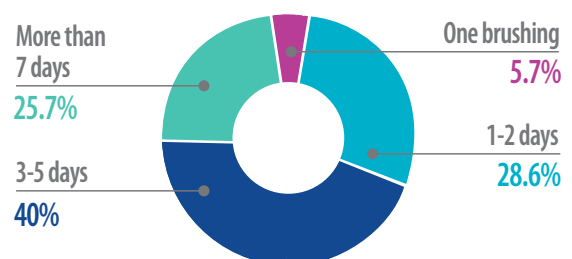
Through the use of proprietary co-polymers, Ultramulsion® benefits your patients by providing a long-lasting coating that lubricates and soothes the soft tissues of the mouth.

Enamelon is the only over-the-counter (OTC) stannous fluoride preventive treatment gel that has been shown in a clinical trial to help reduce many sensory symptoms of dry mouth.[†]

How long did the soothing/moisturizing effect last?*



Time until Enamelon soothed and moisturized dry mouth tissues*



¹ Kamath Deepa G & Nayak Sangeeta U. Dental hypersensitivity and its management – An informed view, J.Pharm Biomed Sci. 2013, February ; 27(27):474-479. (Article no 09)

*Data on File

[†] Milleman J.L., Milleman K.R., Santos S.L., Proskin H.M., Battershell K.K., DiMarino J.C.A. Subjective Assessment of Enamelon® Preventive Treatment Gel in A Self-reported Dry-mouth Population. Compend Contin Educ Dent. 2016;37(8): E6-E10.



Dispense with confidence!

“ Patients that have tried a sensitive toothpaste and have not had any relief, we offer the Enamelon Treatment Gel for the generalized sensitivity. For our dry mouth patients, we offer the Enamelon to help aid in the relief to dry mouth tissues, as well as protect them from caries. ”

- Dr. P., DMD & C. B., RDH, BS , Connecticut



Patient Acceptance!

86% of patients are **likely to recommend Enamelon to a friend.***

93% of patients rated **the taste of Enamelon as pleasant.***



Clinical Results!²

90% of dentists indicated that their patients experienced a **reduction in generalized tooth sensitivity** using Enamelon treatment gel.

95% of dentists indicated they would **incorporate Enamelon** into their practices and offer it to their patients.

75% of dentists indicated their patients experienced some type of **prolonged fresh, smooth, slick feel in their mouths** after using Enamelon.

² Comisi DDS, MAGD, John C., The Catapult Group presents its review on this unique, protective, remineralizing and moisture-enhancing preventive treatment gel, Dental Product Report, 2015, October; Issue 10 Vol. 9:68-69

*Data on File

All patients can benefit from **Enamelon[®]**

	Anti-Caries	Anti-Sensitivity	Anti-Gingivitis
Attrition (Bruxism)		✓	
Caries Risk based on CRA ³	✓		
Crown & Bridge Protection	✓	✓	✓
Dental Erosion	✓	✓	
Gastric Reflux Disease GER/GERD	✓	✓	
History of ECC ⁶	✓		
History of Pit & Fissure Caries	✓		
ICDAS Prevention Care ⁷	✓		
Oncology	✓	✓	✓
Orthodontic	✓		✓
Pediatric	✓		✓
Periodontal	✓	✓	✓
Polypharmacy	✓	✓	
Pregnancy/Maternity	✓		✓
Recession	✓	✓	✓
Special Needs Patients	✓	✓	✓
Whitening/Bleaching		✓	
Xerostomia/Dry Mouth	✓	✓	✓

More protection Less fluoride^{3,4}

Enamelon provides 3x greater reduction of enamel solubility⁴

- Reduces the solubility of enamel, preventing demineralization of the tooth surface when exposed to acids.
- Decreases enamel solubility by 56.91% compared to 18.78% with 5000 ppm fluoride paste, providing 3x greater protection against acid challenges.⁴
- Provides over 2x more beneficial fluoride uptake with only one-fifth the amount contained in 5000 ppm fluoride toothpastes.³



Ordering Information

9007285 Enamelon[®] Preventive Treatment Gel
4.0 oz (113 g), Clean Mint, 12/case

Not available in Canada.

³ Schemehorn BR, DiMarino JC, Movahed N. Comparison of the Incipient Lesion Enamel Fluoride Uptake from Various Prescription and OTC Fluoride Toothpastes and Gels. Journal of Clinical Dentistry, 2014; 25:57-60

⁴ Schemehorn BR, DiMarino JC, Movahed N. Comparison of the Enamel Solubility Reduction from Various Prescription and OTC Fluoride Toothpastes and Gels. Journal of Clinical Dentistry, 2014; 25:61-64.

⁵ CRA=Caries Risk Assessment curriculum. (ADA, AAPD, CAMBRA, etc)

⁶ Early Childhood Caries is defined as the presence of one or more decayed (non-cavitated or cavitated lesions), missing (due to caries) or filled tooth surfaces in any primary tooth in a preschool-age child between birth and 71 months of age. The term "Severe Early Childhood Caries" refers to "atypical" or "progressive" or "acute" or "rampant" patterns of dental caries. – ADA Statement on Early Childhood Caries. www.ada.org/2057.aspx

⁷ ICDAS (International Caries Detection and Assessment System) is detection and assessment system classifying states of the caries process. www.icdas.org



Enamelon® Fluoride Toothpaste

0.45% Stannous Fluoride (1150 ppm F)



Enamelon® Toothpaste contains the same clinically proven active ingredient optimized with calcium and phosphate ions as the preventive treatment gel, but in an 1150 ppm F formulation with a low abrasive for everyday use.

- Aids in the prevention of cavities
- Builds increasing protection against painful sensitivity of the teeth to cold, heat, acids, sweets or contact
- Helps to prevent gingivitis
- Helps to interfere with the harmful effects of plaque associated with gingivitis
- Delivers more fluoride uptake to the teeth^{3,17}
- Strengthens teeth better than the 5000 ppm F toothpastes³
- Promotes remineralization and inhibits demineralization
- Soothes and moisturizes discomfort associated with dry mouth tissues
- Low-abrasive toothpaste (RDA of 39)
- Contains no SLS, gluten or dyes

Ordering Information

9007280	Enamelon® Toothpaste 4.3 oz (122 g) Mint Breeze, 12/case
9007290	Enamelon® Toothpaste 0.75 oz (21.2 g) Mint Breeze, 24/case

Not available in Canada.

Science Defined

Amorphous Calcium Phosphate (ACP) - Building blocks of tooth mineral^{8,9,10,11}



The most reactive and soluble calcium phosphate compound, ACP forms on the tooth enamel, within the dentinal tubules and provides a calcium and phosphate reservoir. Research shows that available ACP on the enamel can prevent damaging erosion by stimulating remineralization of tooth structure.^{12,13,14} Introducing calcium and phosphate back into the surface of the tooth with products containing ACP technology is an ideal strategy to reverse the demineralization process.

The ACP-forming ingredients also strengthen teeth by acting as an enhanced fluoride delivery system to deliver more fluoride than products without ACP.² The patient has the benefit of fluoride uptake without greater exposure to higher fluoride concentrations or volumes. ACP combines with fluoride to desensitize dentin. Fluoride, along with ACP, occludes tubules by depositing tooth-like minerals to create a semi-permanent reduction in hydraulic conductance. This is a proven mechanism to reduce dentinal hypersensitivity.

Value of Fluoride Sources

Fluoride reacts with tooth mineral, forming either fluoridated apatite (firmly-bound) or calcium fluoride (loosely-bound).

Firmly-bound fluoride, incorporated onto the surface of the crystals of apatite, can reduce the solubility of tooth mineral and hence inhibit demineralization due to acids generated by plaque bacteria.¹²

Loosely-bound (labile F) fluoride provides a relatively slow-release form of ionic fluoride to plaque and saliva.¹³ There has been renewed interest in loosely-bound fluoride as a reaction product of fluoridation to act as a potential "reservoir" source of solution fluoride enhancing remineralization and retarding demineralization processes.¹³





Enamel Pro®

The ONLY prophylaxis paste formulated to deliver ACP

Strengthen their smiles!

Enamel Pro® offers innovative remineralizing technology through Amorphous Calcium Phosphate (ACP).¹⁴

- Enamel Pro prophylaxis paste delivers 31% more fluoride uptake into the enamel than prophylaxis paste without ACP¹⁵
- Provide a true benefit to your patients while your prophylaxis provides a lustrous smile
- Gluten-free

Box of 200 - With Fluoride

9007604 Cinnamon Fine
9007605 Cinnamon Medium
9007606 Cinnamon Coarse

9007607 Strawberry Fine
9007608 Strawberry Medium
9007609 Strawberry Coarse

9007610 Grape Fine
9007611 Grape Medium
9007612 Grape Coarse

9007614 Bubblegum Fine
9007615 Bubblegum Medium
9007616 Bubblegum Coarse

9007620 RaspberryMint Fine
9007621 RaspberryMint Medium
9007622 RaspberryMint Coarse

9007617 VanillaMint Fine
9007618 VanillaMint Medium
9007619 VanillaMint Coarse

9007600 Mint Fine
9007601 Mint Medium
9007602 Mint Coarse
9007603 Mint Extra Coarse

Without Fluoride

9007613 Mint Coarse

Each box of Enamel Pro® contains 200 single-use cups, packaged in a foil bag and a Comfy-Grip™ prophylaxis cup holder.

9007650 Comfy-grip™ cup holder (3)

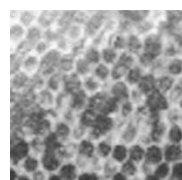
©Zygo is not a registered trademark of Premier Dental Products Company.

®ARM & HAMMER is a registered Trademark of Church & Dwight Company.

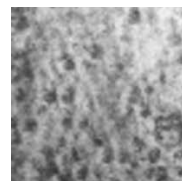
Intense Polish & Shine

Greater luster for whiter, brighter teeth^{18,20}

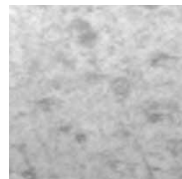
Zygo® non-contact profilometry intensity map profiles



Enamel surface before prophylaxis polishing



After prophylaxis polishing with lead-in prophylaxis paste



After prophylaxis polishing with Enamel Pro®

⁸ Tung, M.S., Eichmiller, F.C., Paffenbarger Research Center. ADAHF. NIST, Gaithersburg, MD. "Dental Applications of Amorphous Calcium Phosphates" Journal of Clinical Dentistry, Vol.10, Issue 1, 1999.

⁹ Tung, M.S., Eichmiller, F.C. "ACP for Tooth Mineralization", Compendium Cont. Educ Dent, Vol 25, No. 9, Suppl. 1, Sept. 2004, p 9-13. Journal Code 9600713, Journal Subset MEDJSD, ISSN 1548-8578. Corp. Author: American Dental Association Foundation.

¹⁰ Tung, M., Eichmiller, F., Gibson, H., Ly, A., Skrtic, D., Schumacher, G., (ADAHF Paffenbarger Research Center, NIST, Gaithersburg, MD), "Dentin Desensitization by in situ Formation of Calcium Phosphate", J. Dent Res 76 (IADR Abstracts):2985, 1997

¹¹ Tung, M.S., O'Farrell, T.J., Liu, D.W., Paffenbarger Research Center. ADAHF. NIST, Gaithersburg, MD. "Remineralization by Amorphous Calcium Phosphate Compounds" Journal of Dental Research, Vol. 72, Abstract No. 1738, 1993.

¹² Schemehorn, B.R., Wood, G.D., McHale, W., Winston, A.E., "Comparison of Fluoride Uptake into Tooth Enamel from Two Fluoride Varnishes Containing Different Calcium Phosphate Sources", J Clin Dent, 2011;22:51-54.

¹³ White, D.J. and Nancollas, G.H. "Physical and Chemical Considerations of the role of firmly and loosely bound fluoride in caries prevention", J Dent Res, 1990, 69:587-594.

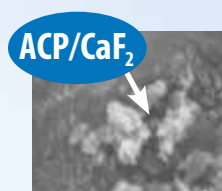
¹⁴ Tung, M.S., Malerman, R., Huang, S. and McHale, W.A. "Reactivity of Prophylaxis Paste Containing Calcium, Phosphate and Fluoride Salts", Journal of Dental Research, Vol. 84, Special Issue A, IADR Abstracts, 2005.

¹⁵ Source: "Final Report: Enamel Fluoride Uptake Study #05-106, Modified FDA Method #40," Dental Products Testing, Indiana University Emerging Technologies Center, December 2005.

¹⁶ Winston, A.E., Charrig, A., Patel, V., McHale, W.A. and Malerman, R. "Effect of Prophylaxis Pastes on Surface of Tooth Enamel", Journal of Dental Research, Vol. 84, Special Issue A, IADR Abstracts, 2005.

¹⁷ Schemehorn, B.R., Orban, J.C., Wood, G.D., et al. Remineralization by Fluoride Enhanced with Calcium and Phosphate Ingredients, Journal of Clinical Dentistry, 1999; 10(1 spec. no.):13-16.





Amorphous calcium phosphate and calcium-fluoride mineral on dentin surface and in tubules

Enamel Pro Varnish offers a nice esthetic appearance, is patient pleasing and has studies supporting fluoride uptake, fluoride release and diminished hydraulic conductance.^{12,18,19}

5% NaF Varnish

Box of 35

- 9007540 Strawberries 'n Cream 0.40ml
- 9007541 Bubblegum 0.40ml
- 9007547 VanillaMint 0.40ml
- 9007542 Bubblegum 0.25ml

Box of 200

- 9007543 Strawberries 'n Cream 0.40ml
- 9007544 Bubblegum 0.40ml
- 9007545 VanillaMint 0.40ml

Each box contains single-unit doses and an applicator brush, post-application patient care instructions and doctor's directions for use.

VanillaMint is not available in Canada.

Enamel Pro Tutorials!

Go to www.premusa.com to view online tutorials!



"Outstanding Products"™

*An independent non-profit dental education and product testing foundation, December 2006

†3M Vanish and Colgate Duraphat are not trademarks of Premier Dental Products Company.

Enamel Pro® Varnish

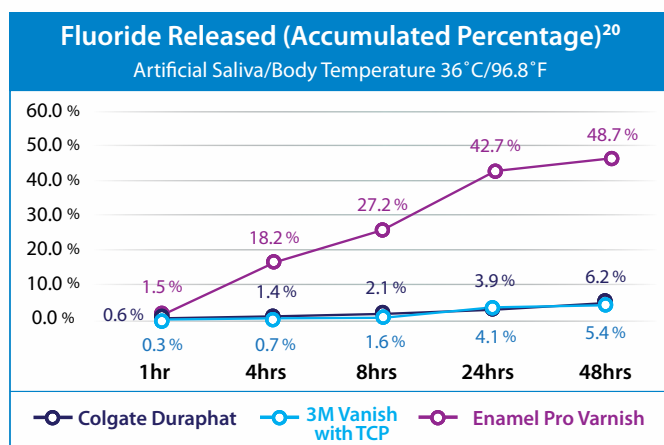
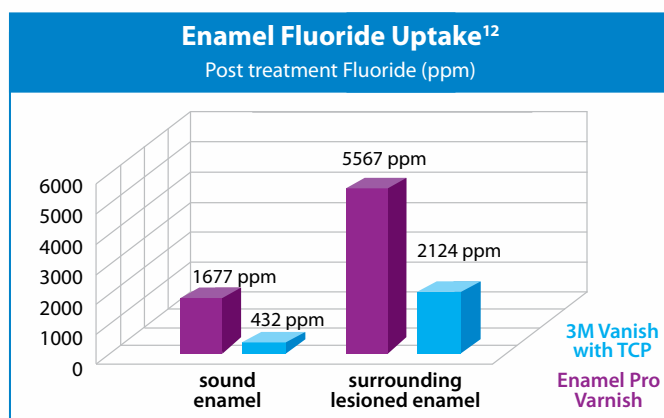
First advanced fluoride varnish optimized to provide valuable tooth building ions of calcium and phosphate

Designed to create substantive forms of CaF₂ and ACP.

Indications for Use

Enamel Pro® Varnish is a fluoride containing preparation for the treatment of dentinal hypersensitivity, and for the reduction of post operative sensitivity.

Independent studies show Enamel Pro Varnish delivers **more enamel fluoride uptake and greater fluoride release** than 3M Vanish[†].^{12,20}



In a 2012 study evaluating incubation conditions on fluoride release in vitro, Enamel Pro Varnish displayed greater fluoride release than both 3M Vanish and Colgate Duraphat[†].²⁰



Enamel Pro® Gel

The ONLY fluoride gel formulated to deliver ACP

1.23% Non-acidulated Fluoride Topical Gel

- Enamel Pro® Gel with ACP technology is non-acidulated, yet provides the same fluoride uptake as acidulated phosphate (APF) gels.²¹
- Enamel Pro Gel offers the same advantage as neutral pH gels; safe for patients with porcelain, composite restorations and sealants.
- No dulling or etching of teeth which could occur in APF gel use.²²
- Use of fluorides for the prevention and control of caries is documented to be both safe and highly effective.²³
- Fluoride gel is effective in preventing caries in school-aged children.²⁴
- ACP and fluoride are known to inhibit demineralization and enhance remineralization.^{25,26}
- Great flavors without the acidic aftertaste.

16 ounce (480ml) bottle - gluten free

9007200 Bubblegum

9007201 Strawberry

9007203 Orange

Not available in Canada.

¹⁸ Source: "Final Report: Enamel Fluoride Uptake Study #08-151, Modified FDA Method #40V", Dental Products Testing, TheraMetric Technologies, Inc., Indiana University Emerging Technologies Center, March 2008.

¹⁹ "Effect of Calcium Phosphate Containing Fluoride Varnish on Dentin Permeability", Tung, M.S., Torres, J., (ADAHF Paffenbarger Research Center, NIST, Gaithersburg, MD and U.S. Navy Dental Corps, Bethesda, MD), J Dent Res 86 (Spec Iss A): 0985, 2008 (www.dentalresearch.org)

²⁰ Fluoride Release from Fluoride Varnishes is Affected by Incubation Conditions C. Gonzalez-Cabezas, S.E.Flannagan, R. Krell, M. Uekihara, and C.C. Niquette, Dent Res 91(Spec Iss A):1094, 2012 (www.dentalresearch.org)

²¹ Source: "Final Report: Sound Enamel Fluoride Uptake Study # 08-230 FDA Method #40ST," Dental Products Testing, Indiana University Emerging Technologies Center, September 2008.

²² Council on Dental Materials Instruments and Equipment. Status report: effect of acidulated phosphate fluoride on porcelain and composite restorations. J Am Dent Assoc 1988; 116:115

²³ American Academy of Pediatric Dentistry, Guideline on Fluoride Therapy, Pediatr Dent 2008; Clinical Guidelines 121-124; http://www.aapd.org/media/Policies_Guidelines/G_FluorideTherapy.pdf

²⁴ "Professionally applied topical fluoride: Evidence-based clinical recommendations", American Dental Association, Council on Scientific Affairs, J Am Dent Assoc., 2006; 137: 1151-1159

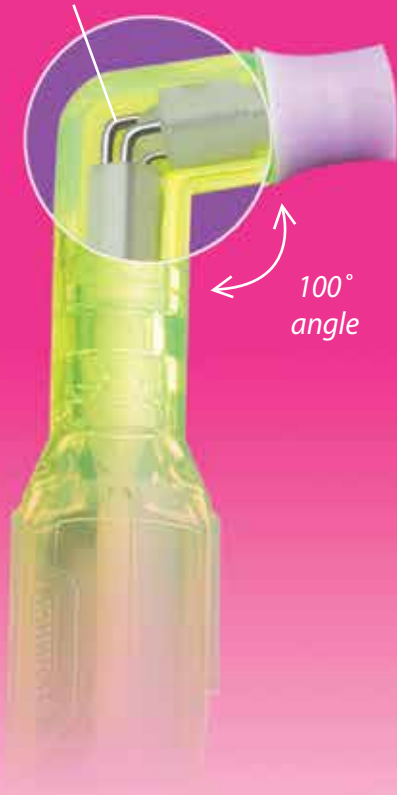
²⁵ Schemehorn, B.R., Orban, J.C., Wood, G.D., et al. "Remineralization by Fluoride Enhanced with Calcium and Phosphate Ingredients", Journal of Clinical Dentistry, 1999; 10(1 spec. no.):13-16.

²⁶ Featherstone, John D.B., The Science and Practice of Caries Prevention, J Am Dent Assoc., 2000; 131: 887-899.





Patented
gearless design



100°
angle

2pro[®]

Total Access[®]

Disposable Prophylaxis Angle

Saves time and money

Comparably priced to other angles, yet when needed, you save time and money by removing the cup to clean remaining areas with 2pro's gentle tip

Provides total access

2pro's unique 2-in-1 design guarantees total access to all tooth surfaces

Runs smoothly and quietly

Patented gearless design ensures quiet, smooth-running, vibration-free operation with less heat build-up

Easier access to lingual areas

Ergonomic 100° design offers comfort and convenience by reaching all areas of the mouth

Latex free

2pro [®]	Bag of 144	Bulk Package (1,000 angles)
Soft/Short Cup (purple cup)	5500101	5510001
Firm/Short Cup (blue cup)	5500102	5510002
Soft/Long Cup (white cup)	5500103	5510003
Firm/Long Cup (green cup)	5500104	5510004

Order through your authorized dealer.

CE
0470



Top Prophylaxis Angle

Top Prophylaxis Angle
2013, 2014 & 2015



Top Hygiene Product for 2011



Soft/short
purple cup,
short tip

Firm/short
blue cup,
short tip

Soft/long
white cup,
long tip

Firm/long
green cup,
long tip

Get Total Access!

2pro cleans and polishes all tooth surfaces with its unique cup and tip design!

No added expense for tips or brushes!

Use the cup to polish all tooth surfaces. Use the tip for gingival and proximal areas, occlusal surfaces, veneer margins, around implants and orthodontic brackets.

“ I absolutely love the Premier® 2pro® total access soft disposable prophyl angle. The cup shape reduces splatter and is easy to use. Being able to remove the cup and use the rubber point is great. This allows access around the orthodontic brackets and wires. ”

- Sandra B., RDH, Pennsylvania

Cup On



Facial surfaces

Cup Off



Veneer margins



Orthodontic brackets



Gingival/proximal



Perfecta® Bravo®

9% Hydrogen Peroxide

Only 30 minutes, once a day!

Patented water-based formulation hydrates teeth as they whiten to avoid sensitivity.

Bravo Patient Pak 4000092

Complete 2-week patient treatment. Contains 4 - 3cc syringes with tray case and tray material in cosmetic patient pouch.

Bravo Value Pak 4000093

Enough material for six patient treatments. Contains 24 - 3cc syringes and six cosmetic patient pouches. You add trays and tray cases.

Bravo 50 Pak 4000094

Contains 50 - 3cc syringes. You add trays and tray cases.

Bravo Touch-Up Pak 4000091

Contains 1 - 3cc syringe.

Not available in Canada.



Perfecta® REV!®

14% Hydrogen Peroxide

Only 15 minutes, once a day!

The ideal combination for compliance - short wear time and less sensitivity.

- **REV! delivers short wear time** - 1/4 the time of the leading strips.^{27,28}
- **Less Sensitivity** - 66% less sensitivity than the leading strips^{27,28}
- **Superior Whitening** - Patented technology with proven results²⁷

REV! Finishing Rinse

- Specially buffered formula immediately accelerates the breakdown of the gel into its active components, providing an added boost to the final whitening effect.
- Rinsing effect safely removes residual gel from teeth and any soft tissue.
- Contains an advanced form of highly stable Vitamin C which is known to protect soft tissue from any available free radicals and is known to promote healthy teeth and gingiva.
- Contains Pentasodium Triphosphate, a sequestering ingredient that helps to "lift and remove" enamel stain.
- Alcohol-free, cool mint flavor which leaves the mouth clean and refreshed after every treatment.

Suggest a REV! Refresher for all your previous whitening patients. Get them back to your office and keep them smiling white.

REV! Six Patient Paks 4000142 Available individually through dealer.

Each Patient Pak is a complete 2-week treatment. Contains 2 - 3cc syringes with 4oz (118.3ml) REV! finishing rinse. You add trays and tray cases.

REV! Six Refresher Paks 4000141 Available individually through dealer.

Ideal for touch-ups. Contains 1 - 3cc syringe with 4oz (118.3ml) REV! finishing rinse. You add trays and tray cases.

Not available in Canada.

²⁷ Clinical Evaluation of Bleaching Efficacy of Two Different Systems, Sheila Koh, D.D.S., F.A.G.D. University of Texas Health Science Center at Houston - Dental Branch, December 2004.

²⁸ Crest® Whitestrips® Supreme

Perfecta® Carbamide Peroxide

Perfecta 16%

Can remove a full range of stains including those resulting from tobacco, dark beverages and even tetracycline. Wear time can be adjusted for light stains and for those patients with a history of thermal sensitivity.

Perfecta 21%

Tetracycline stains, fluorosis. Dispense only to compliant patients with no history of thermal sensitivity.



Not available in Canada.

Perfecta®

Perfecta® carbamide peroxide gels are formulated with a predominantly glycol base for minimal dehydration and sensitivity.

Perfecta Patient Pak

Complete 2-week patient treatment. Contains 6 - 3cc syringes with dispensing tips, tray case, tray material, patient instructions, doctor's instructions, and cosmetic patient pouch.

	Unflavored	Mint
16%	4000161	4000162
21%	4000211	4000212

Perfecta Value Pak

Enough whitening material to create six 2-week patient treatments or use for touch-up treatments. Contains 36 - 3cc syringes with dispensing tips, 6 patient instructions, doctor's instructions and six cosmetic patient pouches. You add trays and tray cases.

	Unflavored	Mint
16%	4000163	4000164
21%	4000213	4000214

Perfecta 50 Pak

Contains 50 - 3cc syringes with dispensing tips, 8 patient instructions, 25 prescription bags, doctor's instructions.

	Unflavored	Mint
16%	4004160	4004165
21%	4004210	4004215

Accessories

4008311	Tray Cases (24 Pearl White)
4008305	.040" Tray Material, 5 x 5" (25)
4008300	Perfecta Block-Out Resin

Standard Tubes 2-arch supply per tube

A tremendous value with 2 ounces (59cc) of whitening gel in a squeeze tube. Ideal for long-term cases (tetracycline).

4007115	11% Standard Tube	(Mint)
4007165	16% Standard Tube	(Mint)
4007215	21% Standard Tube	(Mint)

ALFA™ Triple Tray®

Full-arch Alginate Impression Making

Ideal for whitening trays - one step, two impressions!

Box of 24

Small	1006313	Large	1006333
Medium	1006323	Assorted	1006343



Tray Magic™ Soft Tray Trimmer

Custom Trays - Quickly and Easily
No scissors - no grinding

110V 4008200

Not available in Canada.



In-Office Tooth Whitening

Perfection White™

35% Hydrogen Peroxide Whitening

Four-Patient Kit 4008104





Big Easy®
Ultralite™

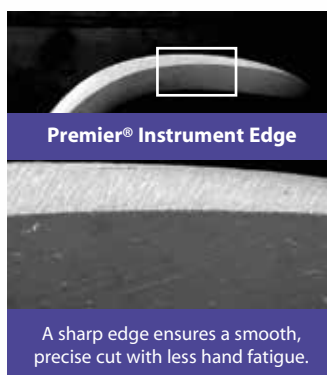
Light Touch™

Big Easy®

Premier® SmartSharp® Technology

Premier's innovation in sharpening technology allows you to start sharp and work smart:

- **Easily maintain sharpness** – proprietary process ensures a well defined edge you can easily re-sharpen as needed – to maintain efficiency
- **Apply less pressure and use fewer strokes** – achieve a glass-like tooth surface – more easily
- **SmartSharp® now available on Premier Scalers and Curettes** – at no additional cost - on your choice of ergonomic handles - made in the U.S.A. with 100 years experience



Scalers

NEW

Sickle

CE



WIL 8 • BEUL-05681 • BE-1005130 • LT-1004877



H6/H7 • BEUL-05621 • BE-1005040 • LT-1004839 • LTO-1004589



H5/33 • BEUL-05629 • BE-1005060 • LT-1004838 • LTO-1004588



U15/30 • BEUL-05631 • BE-1005065 • LT-1004842 • LTO-1004592



U15/33 • BEUL-05633 • BE-1005070 • LT-1004843 • LTO-1004593



Nebraska 128 • BEUL-05680 • BE-1005125 • LT-1004876



Morse 0/00 • BEUL-05695 • BE-1005855 • LT-1004855



NV1 Anterior • BEUL-05690 • BE-1005850 • LT-1004850



NV2 Posterior • BEUL-05691 • BE-1005851 • LT-1004851



NV4 • BEUL-05684 • BE-1005854 • LT-1004854



135 • BEUL-05694 • BE-1005853 • LT-1004853



137 • BEUL-05692 • BE-1005852 • LT-1004852



**Big Easy®
Ultralite™ (BEUL)**
1/2" diam., 16g



Big Easy® (BE)
7/16" diam.
23g



**Light Touch™
Round (LT)**
5/16" diam.
21g



**Light Touch™
Octagon (LTO)**
1/4" diam.
18g

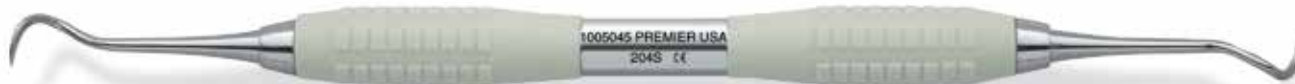


204 Series



204

• LT-1004840



204 S

• BEUL-05623 • BE-1005045 • LT-1004837 • LTO-1004587



H-204 S

• BEUL-05625 • BE-1005050 • LT-1004846 • LTO-1004596



H-204 SD DISTAL

• BEUL-05627 • BE-1005055 • LT-1004847 • LTO-1004597

Jacquette



Jacquette 1/15

• LT-1004832



Jacquette 15/15

• LT-1004833



Jacquette 2/3

• LT-1004834



Jacquette 25/35

• LT-1004835



Jacquette 34-35

• BEUL-05645 • BE-1005100 • LT-1004830 • LTO-1004586

Cattoni



103/106

• LT-1004848

Curettes

CE

Columbia



Columbia 2L/2R

• BE-1005028 • LT-1004800



Columbia 4L/4R

• BEUL-05615 • BE-1005030 • LT-1004801



Universal Implant Scaler (Columbia 4L/4R)

2 pack • 9061401
5 pack • 9061400



Columbia 13/14

• BEUL-05617 • BE-1005035 • LT-1004802 • LTO-1004552

McCall



McCall 13/14

• BEUL-05635 • BE-1005075 • LT-1004823



McCall 13S/14S

• BEUL-05639 • BE-1005085 • LT-1004821 • LTO-1004571



McCall 17/18

• BEUL-05637 • BE-1005080 • LT-1004824



McCall 17S/18S

• BEUL-05641 • BE-1005090 • LT-1004822 • LTO-1004572

Younger-Good



Younger-Good 7/8

• LT-1004875



H Younger-Good 7/8 • BEUL-05693



**Big Easy®
Ultralite™ (BEUL)**
1/2" diam., 16g



Big Easy® (BE)
7/16" diam.
23g



**Light Touch™
Round (LT)**
5/16" diam.
21g



**Light Touch™
Octagon (LTO)**
1/4" diam.
18g

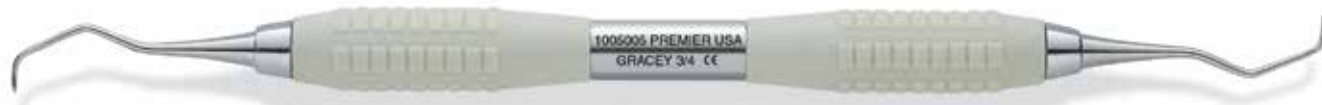


Scalers

Gracey



Gracey 1/2 • BEUL-05601 • BE-1005001 • LT-1004810 • LTO-1004560
Short shank for incisors and cuspids



Gracey 3/4 • BEUL-05603 • BE-1005005 • LT-1004811 • LTO-1004561
Short contra-angle shank for incisors and cuspids



Gracey 5/6 • BEUL-05605 • BE-1005010 • LT-1004812 • LTO-1004562
Medium shank for cuspids and molars



Gracey 7/8 • BEUL-05607 • BE-1005015 • LT-1004813 • LTO-1004563
Medium contra-angle shank for bicuspid and molars, buccal and lingual surfaces



Gracey 9/10 • BEUL-05609 • BE-1005018 • LT-1004814
Long contra-angle for molars with more acute blade angle



Gracey 11/12 • BEUL-05611 • BE-1005020 • LT-1004815 • LTO-1004565
Triple angulation for easy access to buccal/mesial and lingual/mesial surfaces of premolars and molars



Gracey 13/14 • BEUL-05613 • BE-1005025 • LT-1004816 • LTO-1004566
Triple angulation for easy access to distal/posterior surfaces of premolars and molars



Gracey 11/14 • LT-1004817
For easy access to a facial or lingual sextant with a single instrument.







Gracey 12/13 • LT-1004818
For easy access to a facial or lingual sextant with a single instrument.



Gracey 15/16 • BEUL-05653 • BE-1005026 • LT-1004819 • LTO-1004569
Angled shank, designed to reach mesial surfaces of posterior teeth



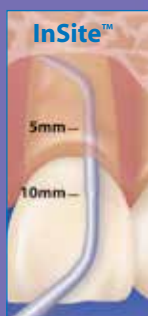
Gracey 17/18 • BEUL-05655 • BE-1005027 • LT-1004820 • LTO-1004570
Highly angled shank for reaching distal surfaces of posterior teeth

 Big Easy® Ultralite™ (BEUL) 1/2" diam., 16g						 Big Easy® (BE) 7/16" diam. 23g						 Light Touch™ Round (LT) 5/16" diam., 21g						 Light Touch™ Octagon (LTO) 1/4" diam., 18g								
						InSite Pocket Scalars						InSite Mini Pocket Scalars														
Gracey	BEUL	BE	LT	LTO	Rigid LT	Gracey	BEUL PS	BE PS	LT PS	BEUL MPS	BE MPS	LT MPS	Gracey	BEUL PS	BE PS	LT PS	BEUL MPS	BE MPS	LT MPS	Gracey	BEUL PS	BE PS	LT PS	BEUL MPS	BE MPS	LT MPS
1/2	05601	1005001	1004810	1004560	1004790	1/2	05660	—	1004880	05670	1005211	1004894	1/2	05660	—	1004880	05670	1005211	1004894	1/2	05660	—	1004880	05670	1005211	1004894
3/4	05603	1005005	1004811	1004561	1004791	3/4	05661	1005202	1004881	05671	1005212	—	3/4	05661	1005202	1004881	05671	1005212	—	3/4	05661	1005202	1004881	05671	1005212	—
5/6	05605	1005010	1004812	1004562	1004792	5/6	05662	1005203	1004883	05672	1005213	1004896	5/6	05662	1005203	1004883	05672	1005213	1004896	5/6	05662	1005203	1004883	05672	1005213	1004896
7/8	05607	1005015	1004813	1004563	1004793	7/8	05663	1005204	1004886	05673	1005214	1004897	7/8	05663	1005204	1004886	05673	1005214	1004897	7/8	05663	1005204	1004886	05673	1005214	1004897
9/10	05609	1005018	1004814	—	1004794	9/10	—	—	—	—	—	—	9/10	—	—	—	—	—	—	9/10	—	—	—	—	—	—
11/12	05611	1005020	1004815	1004565	1004795	11/12	05665	1005205	1004890	05675	1005215	1004899	11/12	05665	1005205	1004890	05675	1005215	1004899	11/12	05665	1005205	1004890	05675	1005215	1004899
11/14	—	—	1004817	—	—	11/14	—	—	—	—	—	—	11/14	—	—	—	—	—	—	11/14	—	—	—	—	—	—
12/13	—	—	1004818	—	—	12/13	—	—	—	—	—	—	12/13	—	—	—	—	—	—	12/13	—	—	—	—	—	—
13/14	05613	1005025	1004816	1004566	1004796	13/14	05666	1005208	1004892	05676	—	1004901	13/14	05666	1005208	1004892	05676	—	1004901	13/14	05666	1005208	1004892	05676	—	1004901
15/16	05653	1005026	1004819	1004569	1004797	15/16	05667	—	—	05677	—	1004906	15/16	05667	—	—	05677	—	1004906	15/16	05667	—	—	05677	—	1004906
17/18	05655	1005027	1004820	1004570	1004798	17/18	—	—	—	—	—	—	17/18	—	—	—	—	—	—	17/18	—	—	—	—	—	—

Probe



InSite™



After probing, InSite™ scalars provide added visual confirmation that you have reached the base of the pocket.

Gracey Variations

Pocket Scalars (PS) and Mini Pocket Scalars (MPS) have a slender and longer terminal shank to provide access into deeper pockets. MPS has the same slender tip design as PS, but with half the blade length. InSite PS and MPS have a depth gauge at 5mm through 10mm offering an excellent visual guide.

Big Easy Ultralite Pocket Scalars (PS) and Mini Pocket Scalars (MPS) do *NOT* feature the depth gauge found in InSite Scalars

Rigid Gracey designs have a thicker shank than the original Graceys, but are overall slightly shorter for increased strength when removing heavy calculus.



CE

Barnhart



Barnhart 1/2 • BE-1005105 • LT-1004827



Barnhart 5/6 • BEUL-05643 • BE-1005110 • LT-1004829

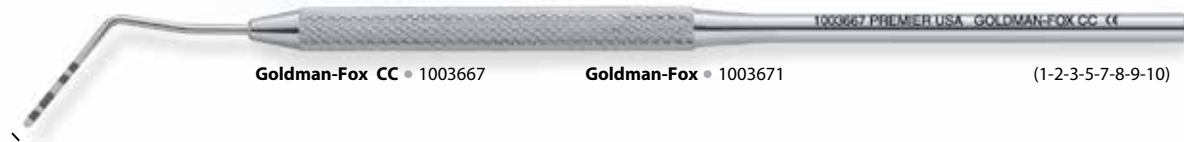
Langer



Langer 1/2 • LT-1004780

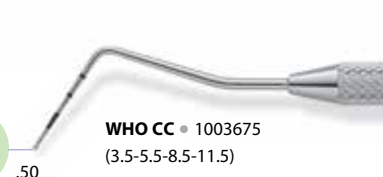
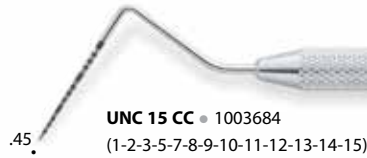


Langer 3/4 • LT-1004781

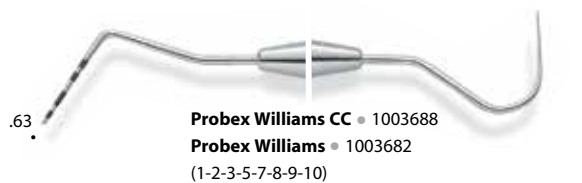
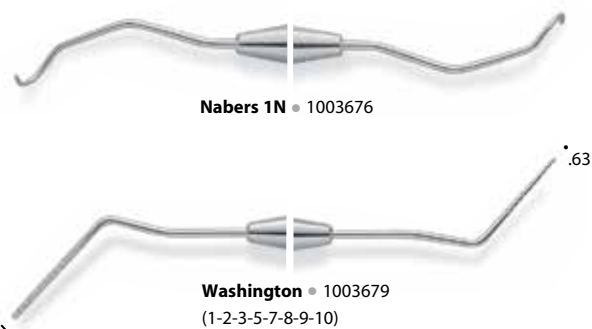


Goldman-Fox • 1003671

(1-2-3-5-7-8-9-10)



Nabers 2N • 1003677



Tip diameter measurements in millimeters. CC indicates color coding.

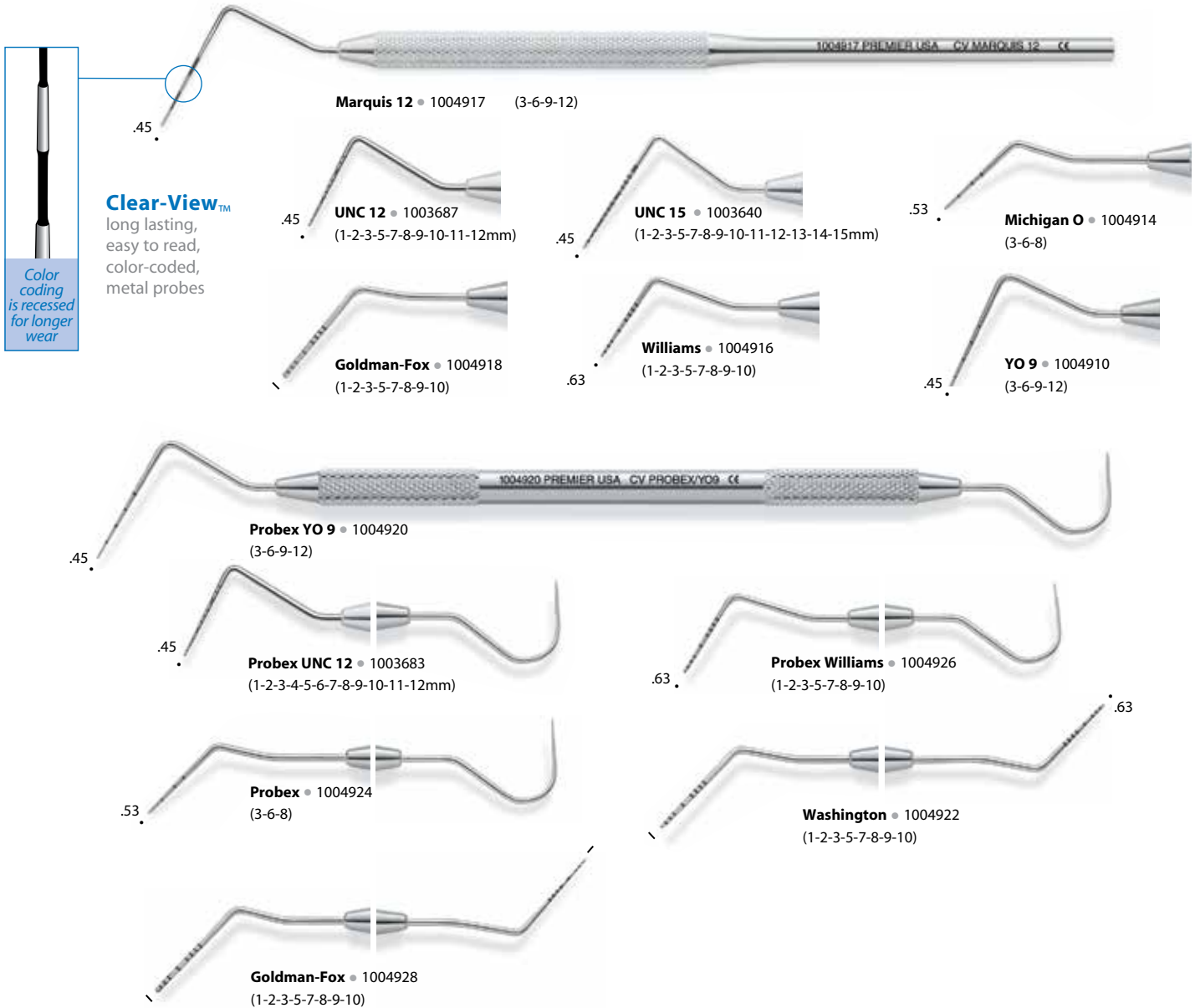
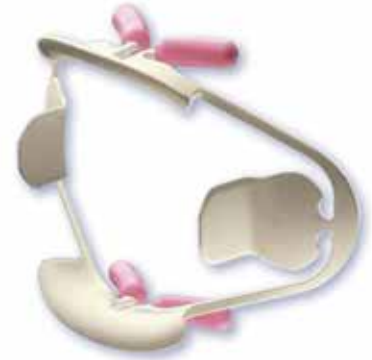
ComfortView® Lip & Cheek Retractor

- Retracts lips and cheeks for optimal buccal and gingival access
- Maximum visibility and patient comfort
- Suitable for use in diagnostic, preventative, therapeutic dental applications, in-office whitening, digital impression scanning and intra-oral photography
- Autoclavable, latex free

9061381 Universal ComfortView Lip and Cheek Retractor - 2 per box (white)

9061383 Small ComfortView Lip and Cheek Retractor - 2 per box (blue)

9061382 ComfortView Refill Cushions -10 per pack



Tip diameter measurements in millimeters.



Explorers



CF 6 • 1003512

CF 6XT • 1003116

OCT 6 • 1003492



CF 6L • 1003513



CF 6L-H • 1003511



CF 17 • 1003514

CF 23 • 1003515

CF 23XT • 1003118

CF 23 12-PK • 1003962

OCT 23 • 1003495

Cavity Finder™ Explorer • Improved tactile sensitivity via multi-piece construction.
• Thin, yet sharp and durable tips.



CF 2 • 1003522

CF 2XT • 1003119

OCT 2 • 1003502

CF 2 12-PK • 1003963



CF 2CH • 1003528



CF 3CH • 1003527

CF 3CH 12-PK • 1003965



CF 5 • 1003523

CF 5 12-PK • 1003964

CF 5XT • 1003120

OCT 5 • 1003503



CF 6 • 1003524

OCT 6 • 1003504



CF 6/23 • 1003526

OCT 6/23 • 1003506



CF 11/12 • 1003529



CF TU 17/23 • 1003509



CF ODH 11/12 • 1003549

Mirror Handles



Cone Socket with Big Easy® Handle • 1005115



Cone Socket • 1003582



Simple Stem with Big Easy® Handle • 1005120



Simple Stem • 1003581

Big Easy® Ultrasonic Inserts

Big Easy cushion-grip ultrasonic inserts for improved ergonomic grip and comfort.

- Ergonomically designed large 7/16" diameter for maximum comfort and decreased fatigue
- Compatible with most magnetostrictive handpieces



Big Easy Ultrasonic Inserts - #10 Universal • 25K-1005300 • 30K-1005310



Big Easy Ultrasonic Inserts - #1000 Triple Bend • 25K-1005305 • 30K-1005315



Big Easy Ultrasonic Inserts - #100 Thin-tip • 25K-1005320 • 30K-1005330



"P" Style Inserts (External Flow)

P 50 • 25K-1006803 • 30K-1006903

P 100 - 25K • Straight-1006801

P 100 - 30K • Straight-1006902



Big Easy Implant Ultrasonic Inserts • 25K-1005326 • 30K-1005336

- Permanently attached PEEK tip will not scratch implants
 - PEEK is considered an advanced biomaterial used in medical implants.
 - PEEK is non-abrasive and proven robust for long-lasting insert tips.
- Effectively removes biofilm and calculus



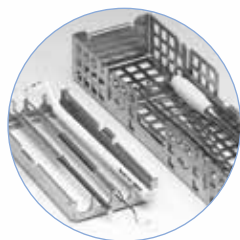
Resin Handle Ultrasonic Insert - #10 Universal • 25K-1006800 • 30K-1006900



Resin Handle Ultrasonic Insert - #1000 Triple Bend • 25K-1006802 • 30K-1006901



Resin Handle Ultrasonic Insert - #100 Thin-tip • 25K-1006820 • 30K-1006920



Instrument Cassettes

Stainless Steel

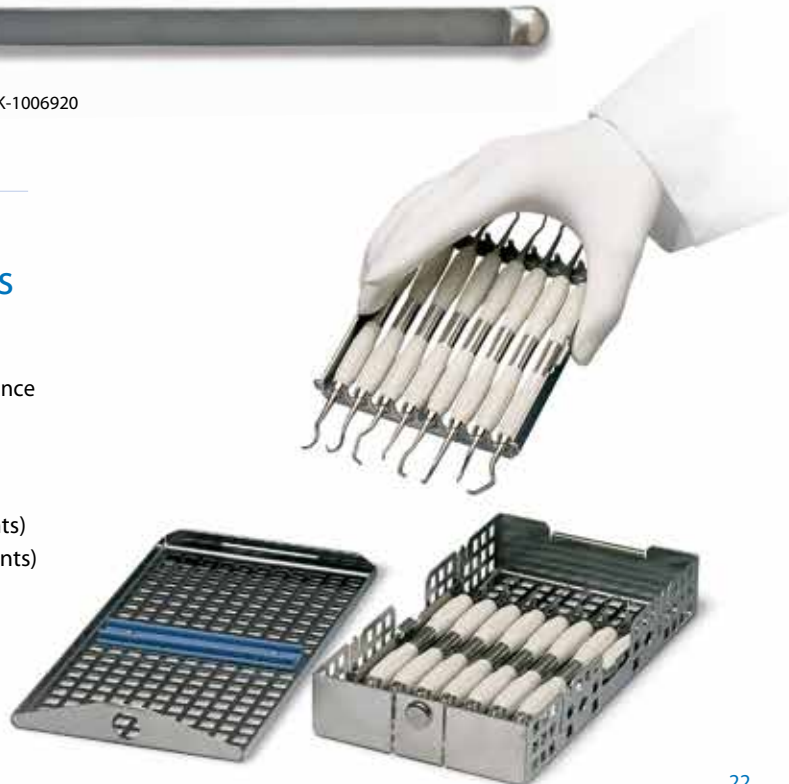
- Proven reliability & quality performance
- Unique, hingeless design
- Compact, double-stack feature

9010904 Mark I (4 or 8 instruments)

9010908 Mark VI (8 or 16 instruments)

9010924 Mark IV (12 or 24 instruments)

9010901 Accessory Cassette





CE Premier PerioWise. "The Friendly Probe"®

- Slightly flexible for greater patient comfort.
- Clearly visible when using intra-oral camera.



Original 3-5-7-10mm

• 9006107 (3-pack)

• 9006102 (6-pack)

• 9006105 (12-pack)

"Most Highly Rated"*



3-6-9-12mm

• 9006108 (3-pack)

• 9006104 (6-pack)

• 9006106 (12-pack)

* An independent non-profit dental education and product testing foundation - January 2001./ **. "A Patient-Centered Approach to Periodontal Disease Detection," JOURNAL OF PRACTICAL HYGIENE; Vol. 8, Number 3; May/June 1999.



www.periowise.com



FREE screening system components available from Premier!

A Fast and Accurate Screening System**

The patient Screening Report helps with patient education and compliance.

- **Ideal for full examination or a quick screening**
- **Easy-to-read 3mm green band** indicates periodontal health
- **Reaching a red mark** indicates the possible presence of periodontal disease
- **Safe around implants**
- **Autoclavable**

Premier PerioWise® UNC12 "The Friendly Probe"®

- Provides precision measuring of pocket depths with markings indicating 1mm increments up to 12mm.
- Ideal for complete periodontal examinations and intraoral measurements.

1mm increments up to 12mm



UNC 12

• 9006120 (3-pack)

• 9006121 (6-pack)

• 9006122 (12-pack)

Implant Scalers

- Thin, slightly flexible and safe for use on implants.
- Autoclavable (273 °F/134 °C).



Universal (Columbia 4L/4R)

2 pack • 9061401
5 pack • 9061400



Facial (Goldman-Fox 5)

2 pack • 9061402
5 pack • 9061403



137 Anterior

2 pack • 9061421
5 pack • 9061420



204 Posterior

2 pack • 9061423
5 pack • 9061422

The Cutting Edge in Precision Sharpening



Autoclavable D.I.S.C.™ Instrument Sharpening System

- Simplifies sharpening
- Easy-to-use
- Quick and accurate
- No damage to cutting surface

9048200 Autoclavable D.I.S.C. complete
with (2) sharpening stones and
Comprehensive Guide
to Sharpening

9048093 Sharpening Stone (1)



To view the D.I.S.C. tutorial, go to www.premusa.com



VACU BLAST™ Liquid Evacuation System Cleaner

- Powerful enzymatic cleaner
- Compatible for all amalgam separators
- Non-foaming
- Phosphate- and chlorine-free
- Can be used with or without an atomizer
- Safe on all evacuation systems and plumbing
- Environmentally friendly
- Refreshingly clean eucalyptus scent
- Easy, economical metered-dose packaging
- 64 cleanings per 32oz bottle

9011107 12, 32oz bottles



Vac Attak™ Evacuation System Cleaner

- Especially effective on prophy paste & fluoride gels
- Fast-acting
- Safe and environmentally friendly
- Economical and easy to use
- Up to 100 cleanings per 800g jar

9011101 Six, 800g jars with scoop dispenser





Rapid-Klene®

Automatic Film Processor Cleaner

- Environmentally friendly and biodegradable
- Effectively and safely cleans
- No noxious fumes or scrubbing
- Contains no harmful chemicals

9018000 Case - 12 cartons
of 12 pouches
(144 - 63g pouches)

9018101 Carton - (12 - 63g pouches)



Removalon®-I

Removes Set Cements

- Effectively removes cements
- Convenient and easy to store
- Concentrated powder dissolves quickly
- Environmentally friendly and biodegradable

9011005 Removalon-I Dry Pak
(6 expandable bottles - each
fills up to 1/2 gallon - 1.9L)

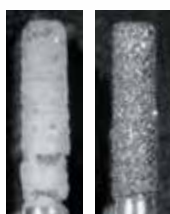


Brite Shield™

Static Soak & Ultrasonic Cleaner

- Cleans and polishes
- Environmentally friendly
- One jar makes up to 34 gallons (128.7L)

9011100 Six, 800g jars with scoop dispenser



Before After
Cleaning with
Brite-Shield

Versatile and
economical
enzymatic
cleaner



Pro Clean™

Professional Strength Tartar and Stain Remover for Dentures, Partials, Retainers and Night Guards

- Extremely effective cleaner
- Environmentally friendly
- Easy to mix & use during patient's
prophy or dispense for patient home use
- Fresh mint scent

9011103 Box of 25 packets

9011102 Case of 10 boxes
(25 packets/box)



PREMA®

- Ideal for treatment of
superficial white, brown and
multi-colored enamel defects
that are less than 0.2mm in depth.

9008010 PREMA Enamel
Microabrasion System - Kit includes
four 1.2ml syringes, 20 syringe tips,
20 polishing cups, 4 mandrels and
doctor's directions for use



Topical Anesthetics



Topicale®

Topical Anesthetic Gel Pumps

- Easy dispensing; minimizes waste
- 10-second onset
- 18% Benzocaine

1.51oz pumps (43g) 3 pumps per pkg

9007140 Assorted

(Cherry, Raspberry, Pina Colada)

9007141 Cherry

9007142 Raspberry

9007143 Strawberry

9007144 Pina Colada



Topicale® Gel Jar

- 18% benzocaine formulation
- Use on areas of injection and/or prior to scaling and curettage to alleviate patient discomfort
- Tropical fruit flavored
- 25% more material than 1oz jars

9007161 Gel - 35g / 1.25oz jar



Topicale® Xtra

Oral Anesthetic Gel

- Three fun flavors, with no bitter after-taste
- 20% Benzocaine formulation for rapid 10-second onset of surface anesthesia of soft tissue
- Economical 1oz jar (28.35g)

9007152 Very Berry Cherry

9007153 Mint Freeze

9007154 Jammin' Strawberry

9007155 Assorted package of 3



Topicale® Ointment

Unique water-soluble base releases active ingredients on contact; permits onset of anesthesia in less than 20 seconds! Provides deeper surface anesthesia.

- Orange-raspberry flavor
- 18% benzocaine formulation

9007151 Ointment - 35g jar



Topicale® GelPatch™

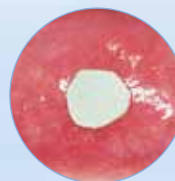
Once placed in the mouth, Topicale GelPatch dissolves gradually - releasing benzocaine to anesthetize surface tissue for up to 20 minutes. Ideal for denture sores, prior to injection and oral ulcer/irritations - appropriate for patient home use.

- Fast acting
- Self-dissolving
- Flexible

9007149 GelPatch - (25) Mint



Prior to Injection



Oral Ulcers/Irritations